

Magnetic microbeads Cell Separation Products



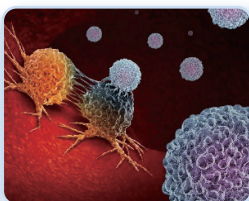
RWD cell separation products include self-developed magnetic microbeads cell separation kits and cell separation columns, which can obtain target cells with high purity and high viability through simple operation.

Nano-sized magnetic beads do not need elution, and the separated cells can be directly used in downstream experiments such as flow cytometry, cell culture, single cell sequencing and so on.

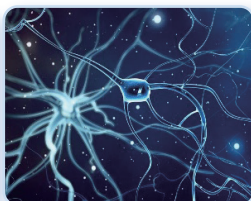
Application field



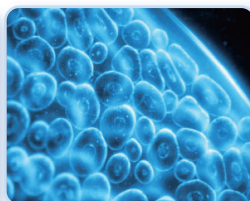
Immunology research



Oncology research



Neuroscience



Stem cell research



Cell therapy

Work flow



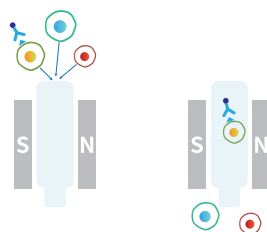
Antibody incubation

Incubate the antibody with cell suspension at 4 °C for 10-15min



Microbeads incubation

Incubate the magnetic microbeads with cell suspension at 4 °C for 10-15min



Magnetic separation

Put the separation column into the magnetic field, add cell suspension into the column. Only cells labeled with magnetic beads be captured in the column



Elution

Remove the column from the magnetic field and add buffer to elute the positive cells

Product features



High purity, high viability and high recovery rate



Obtained cells are compatible with downstream applications

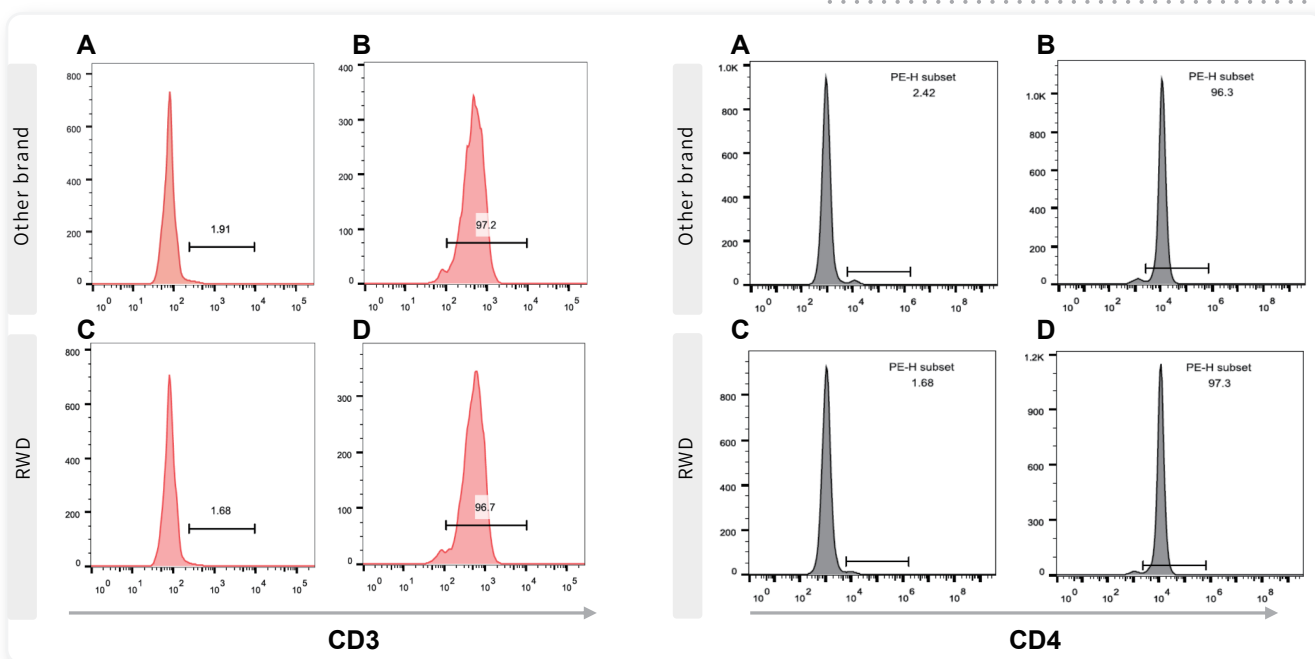


Mild, non-toxic, biodegradable

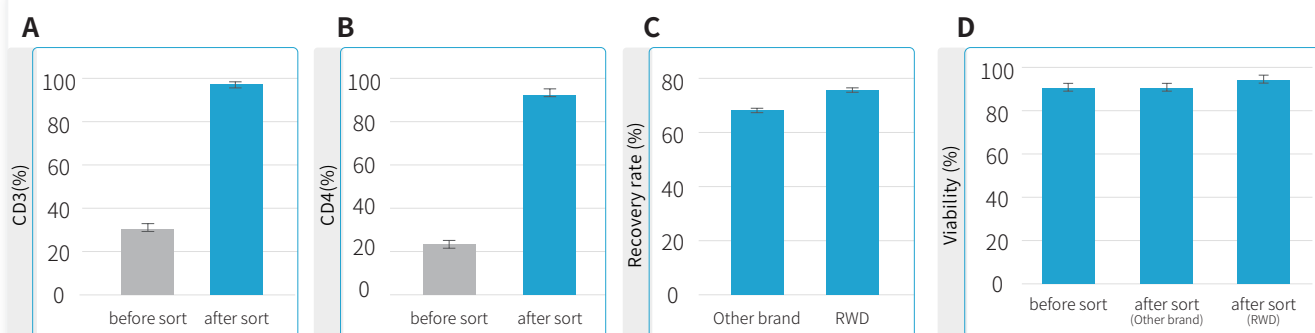


Efficient and convenient

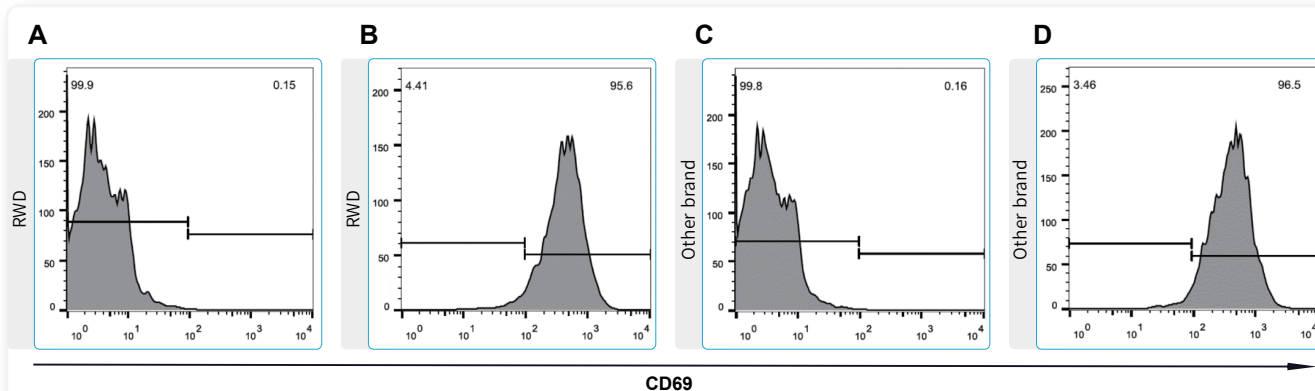
Results display



purity of mouse spleen cell samples after CD3 and CD4 separating: A. and C. negative tube (outflow component of column) , B. and D. positive tube (captured component of Column)



A. and B. purity of mouse spleen cell samples before and after CD3 and CD4 separating, C. and D. recovery rate and viability of mouse spleen cell samples after CD3 separating



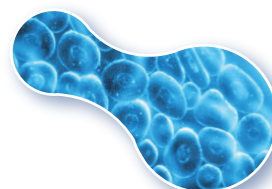
CD69 detection of mouse spleen cell samples after CD3 separating: A. and C. day0 after sorting, B. and D. day3 activated by CD3/CD28 monoclonal antibody

Ordering Information

Cat NO.	Product name	Size	Capacity
K1301-10	Mouse CD3+ Cell Separation Kit	1ml*2	for 1*10 ⁹ total cells
K1302-10	Mouse CD4+ Cell Separation Kit	1ml*2	for 1*10 ⁹ total cells
K1303-10	Mouse CD8+ Cell Separation Kit	1ml*2	for 1*10 ⁹ total cells
K1201-10	Human CD3+ Cell Separation Kit	1ml*2	for 1*10 ⁹ total cells
K1202-10	Human CD4+ Cell Separation Kit	1ml*2	for 1*10 ⁹ total cells
K1203-10	Human CD8+ Cell Separation Kit	1ml*2	for 1*10 ⁹ total cells
HCSC-25	LarSep Columns (25pcs/box)	25pcs/box	/
HCSC-10	LarSep Columns (10pcs/box)	10pcs/box	/
LSC-S1	LSC Separator (single channel)	1pcs	/
SS01	Separation stand	1pcs	/
CSAK-01	Cell Separation assembly kit (single channel)	1set	Including LarSep Columns (25pcs), LSC Separator (single channel) 1pcs, Separation stand 1pcs

LSC Separator and stand

>>>>



Cell Separation Kit

<<<<

LarSep Columns

>>>>



RWD Life Science Co.,Ltd

Add: 19-20/F, Building 7A, Shenzhen International Innovation Valley, Dashi 1st Road, Nanshan District, Shenzhen, Guangdong, P.R. China E-mail: rwd@rwdstco.com

RWD Life Science Inc.

Tel: (858)900-5879 Support: service@rwdls.com Web: www.rwdstco.com